



CARPENTER HOUSE

■ WINDOWS BY DESIGN RECESSED WINDOW FRAMES INTO THE FLOOR AND CEILING TO MAXIMISE SPACE

Carpenter House was originally a traditional weatherboard bungalow located on a busy road in Brighton, Victoria. Lindsay Douglas of Dig Design said, 'The biggest challenge was creating something that was very modern, tying it in with something that was Edwardian, working within the neighbourhood context; but they became the assets to the building too.'

Located on a small block of land, space needed to be maximised whilst allowing living spaces to interact freely with the outdoors. The outside fence and boundaries of the home became the definition of the building.

Dig Design stretched the building elements to the boundaries so that it gave a sense of a larger space which ultimately made it playful and purposeful.

The client's brief was for a home that would suit the needs of a young family to later adapt to their needs in the future. Bringing the family together for interaction was key, which led to the idea of the veranda being the focal point of the home, as it is the main area connecting the interior to the exterior. To soften the edges of the veranda, curved walls were implemented to create the illusion that the space being bigger than it actually is.

AWS | PROJECT FEATURE

Natural light was a desirable element as it did not exist in the owner's previous home. A light-filled stairwell from upstairs fills the area, which allows the house to embrace natural light. All the windows in the home are double glazed and some are high performance glass.

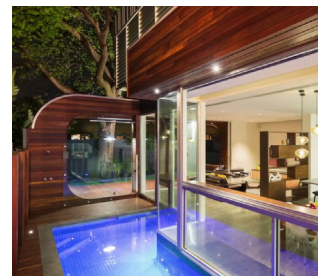
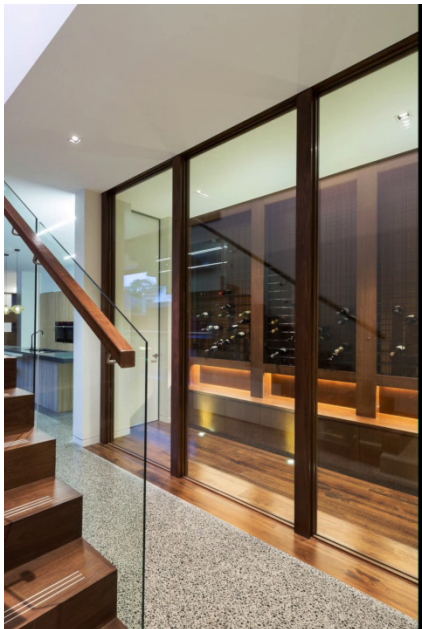
Vantage® Series 616 fixed and awning windows were used throughout the build. In order to increase the sense of space, window frames were recessed into the floor and ceiling.

Elevate Series 704 high performance SlideMASTER™ stacking cavity sliding door was used to connect the living room to the outdoors, and chosen because when open, each panel is hidden in the wall cavity. This contributes to the key requirement of making the space appear bigger.

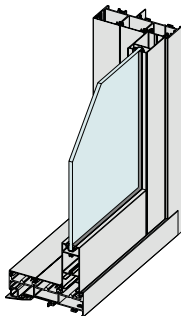
Carpenter House won the 2014 Building Designers Association of Victoria Design Awards for the category Residential Alterations & Additions over \$500K construction cost.



For more information and the full gallery, visit:
elevatealuminium.com.au



Designer: Lindsay Douglas, Dig Design



■ ELEVATE SERIES 704 HIGH PERFORMANCE SLIDEMASTER™ SLIDING DOOR

- × This high-performance sliding door has been tested for compliance with the relevant Australian Standards.
- × The extra strong multi-hollow meeting stiles allow large sliding doors to be fabricated in high wind load areas.
- × Doors can be fitted with surface mounted deadlock, mortice lock or multi-point mortice lock.
- × Doors run on heavy duty double or quad bogey wheel carriages.
- × Variety of bottom rail and midrail sizes available. The tall square bottom rail is standard.
- × Thresholds and snap-in flat filler ensure that the clean looks are maintained.
- × Doors can be fitted with external sliding or internal Centor™ SIE retractable roller fly doors



Windows By Design are leading manufacturers of contemporary architectural aluminium window and door systems. The team will provide you with technical advice, design expertise and quality workmanship to ensure the highest quality products for your project. Let the team at Windows By Design work with you to select the ideal product for your project to maximise the functionality and aesthetics, as well as energy and performance outcomes of your windows and doors.

2D & 3D CAD Files Available | Download from specifyaws.com.au to use in your projects.

For more information on this and the rest of the Vantage range: vantagealuminium.com.au

